

# MICHELIN® CROSSCLIMATE® TIRES

All-weather tires for cars,  
minivans and SUVs/CUVs.



**ARM YOURSELF FOR EVERY  
WEATHER CONDITION.<sup>1</sup>**



**NEW**

MICHELIN® CrossClimate® + | MICHELIN® CrossClimate® SUV



Designed to provide  
summer levels of control  
on dry roads.



Excellent wet grip in  
both summer and winter.



Mobility on snow throughout  
the life of the tire.



Meets USTMA's requirements  
for severe snow traction.



H-/V-rated<sup>2</sup>



W-/Y-rated<sup>2</sup>

<sup>1</sup>The MICHELIN® CrossClimate® tires are not designed for extreme winter road conditions like ice, slush and heavy snow.  
<sup>2</sup>For terms and conditions, see your MICHELIN® Tires Owner's Manual or visit MichelinMan.com.



# MICHELIN® CROSSCLIMATE® TIRES: ENHANCED PERFORMANCE FOR THE LIFE OF THE TIRES IN ALL WEATHER CONDITIONS\*

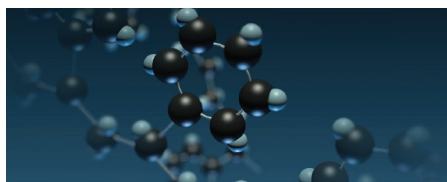
## FAST FACTS

Available for 15" to 18" rims on passenger sedans, minivans and SUVs.

Designed to offer excellent grip on all types of roads throughout the year, without compromise.\*

### How it works.

Three key innovations come together to make this superior performance possible: beveled tread blocks, unique tread pattern and high-performance sipes.

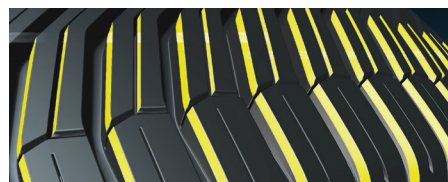


#### Silica-based tread compound

Designed to provide flexibility and grip in summer and winter temperatures.

#### 3-D full-depth sipes

Designed to provide long-lasting traction in wet and snowy conditions.



#### Rigid tread pattern

Designed to optimize the wear life of the tire.

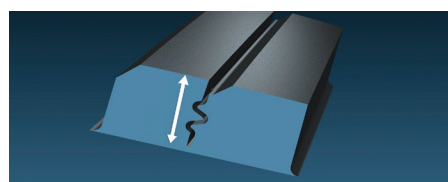
#### Emerging grooves

Designed to help maintain snow traction as the tire wears.



#### V-shaped tread pattern

Designed to maximize grip in snow for the life of the tire.



#### Bevel-edged tread blocks

Designed to optimize grip and braking performance on dry roads.



Thanks to the first all-weather tire from Michelin, consumers will have the confidence to hit the road no matter the weather,\* no matter the season. And they won't have to worry about changing their tires when summer or winter rolls around. This new tire combines the best of summer and winter MICHELIN® tire technology — it is designed to provide grip and control on dry roads and in most cold and snowy conditions, with the exception of extreme winter conditions.\*

TIRE SIZE	LAUNCH DATE	SERVICE DESCRIPTION	PRODUCT CODE	RECOMMENDED RIM WIDTH RANGE (IN.)	SECTION WIDTH ON MEASURING RIM WIDTH (IN.)	OVERALL DIAMETER (IN.)	TREAD DEPTH (IN./32NDS)	REV./MILE @ 45 MPH
<b>CrossClimate® +</b>								
195/65R15/XL DIR	July 2017	95V	46342	5.5 – 7.0	7.9 / 6.0	25.0	9.0	832
205/55R16 DIR	July 2017	91H	26064	5.5 – 7.5	8.4 / 6.5	24.9	9.0	836
205/60R16/XL DIR	Oct. 2018	96V	02310	5.5 – 7.5	8.2 / 6.0	25.7	9.0	810
215/60R16/XL DIR	July 2017	99V	50413	6.0 – 7.5	8.7 / 6.5	26.1	9.0	796
215/55R17/XL DIR	July 2017	98W	04942	6.0 – 7.5	8.9 / 7.0	26.3	9.0	791
225/50R17/XL DIR	July 2017	98V	72199	6.0 – 8.0	9.2 / 7.0	25.9	9.0	803
225/55R17 DIR	July 2017	97W	23729	6.0 – 8.0	9.2 / 7.0	26.8	9.0	777
225/60R17/XL DIR	Oct. 2018	103V	10159	6.0 – 8.0	9.0 / 6.5	27.6	9.0	753
235/45R17/XL DIR	Oct. 2018	97Y	63364	7.5 – 9.0	9.3 / 8.0	25.4	9.0	821
225/45R18/XL DIR	Oct. 2018	95Y	28308	7.0 – 8.5	8.9 / 7.5	25.9	9.0	802
235/45R18/XL DIR	Oct. 2018	98Y	18884	7.5 – 9.0	9.3 / 8.0	26.3	9.0	790
<b>CrossClimate® SUV</b>								
215/70R16 DIR	Oct. 2018	100H	48876	5.5 – 7.0	8.7 / 6.5	27.9	9.0	746
225/65R17/XL DIR	Oct. 2018	106V	29720	6.0 – 8.0	9.0 / 6.5	28.5	9.0	730
235/65R17 DIR	Oct. 2018	104V	14839	6.5 – 8.5	9.5 / 7.0	29.1	9.0	716
225/60R18/XL DIR	Oct. 2018	104W	13118	6.0 – 8.0	9.0 / 6.5	28.6	9.0	727
235/55R18/XL DIR	Oct. 2018	104V	14390	6.5 – 8.5	9.7 / 7.5	28.1	9.0	739
235/60R18/XL DIR	Oct. 2018	107V	07901	6.5 – 8.5	9.4 / 7.0	29.1	9.0	715
245/60R18 DIR	Oct. 2018	105H	30244	7.0 – 8.5	9.8 / 7.0	29.6	9.0	703
255/55R18/XL DIR	Oct. 2018	109W	21407	7.0 – 9.0	10.4 / 8.0	29.0	9.0	717

\*The MICHELIN® CrossClimate® tires are not designed for extreme winter road conditions like ice, slush and heavy snow.

Copyright © 2019 Michelin North America, Inc. All rights reserved. The Michelin Man is a registered trademark owned by Michelin North America, Inc.